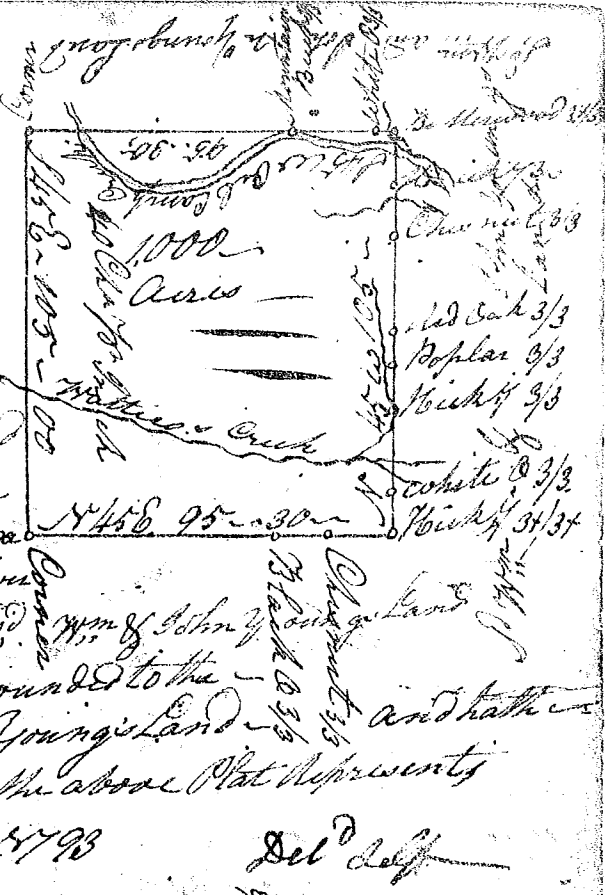
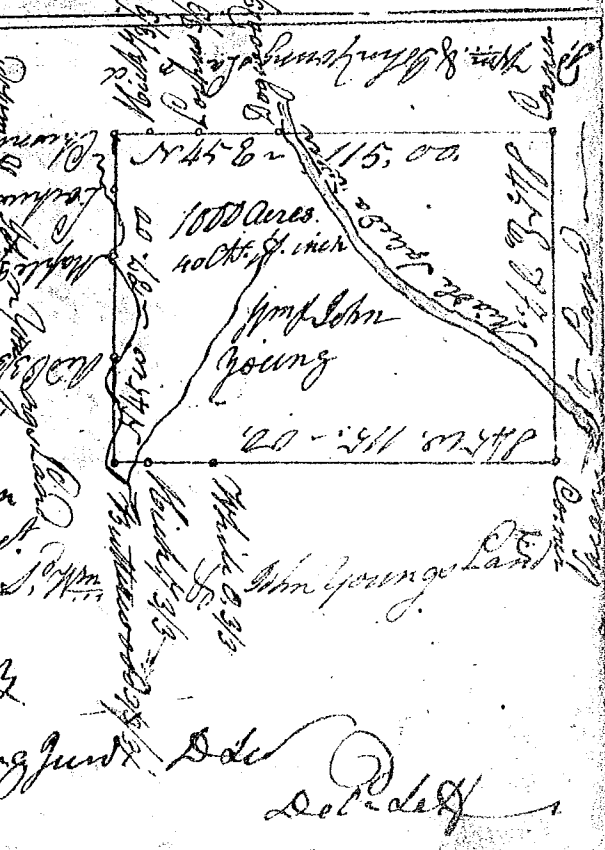


(25)

South Carolina Pursuant to a warrant from John Thomas Esq: Commissioner of Locations Dated the 11th Day of May 1793 I have admeasured and laid out unto William Young and John Young a tract of One thousand acres of Land, situate lying and being in Greenville County on both sides of Oil Camp Creek the west side of the Middle fork of Saluda River and on Waticos Creek waters of the south fork of Saluda River, bounded to the SE, NE, & NW, on S^r W^m and John Young's Land such shape form and marks as the above Plat represents Surveyed the 13th Day of May 1793



South Carolina Pursuant to a warrant from John Thomas Esq: Dated the 11th May 1792 I have admeasured and laid out unto W^m & John Young a tract of One thousand acres of Land, situate in Greenville County on both sides the Middle fork Saluda River bounded to the SE & NW & SW on W^m & John Young's Land & E by val^l Land I hath such form and marks as the above plat represents Surveyed the 13th May 1792



Recorded the 17th May 1793
 Wm Young Junr
 Deed